

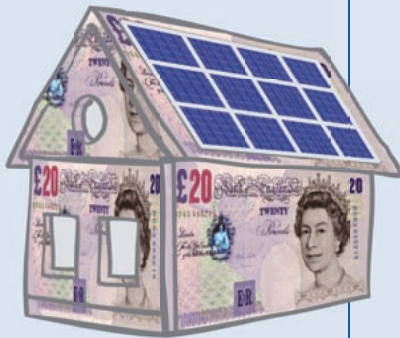


The Feed In Tariff Explained

The new Hamburg Solar Roof Kit from Sharp

What is the Feed In Tariff?

In April 2010 a new scheme was launched as an incentive to encourage domestic and commercial green energy installations in the UK. The scheme, known as the Feed in Tariff (FiT), is a government-backed subsidy that pays you for generating your own energy and for any surplus energy you feed back into the National Grid. The FiT rate you receive is guaranteed for 25 years at the rate you initially signed up at. It is index-linked, tax-free and may even deliver an 8–10% rate of return.



Feed In Tariff Benefits

- Get paid for the electricity you generate, even if you use it yourself.
- Get additional money for the electricity you feed back into the grid.
- Reduce or even eliminate your energy bills.
- Protect yourself against future energy price increases.
- Reduce your reliance on fossil fuels and help protect the environment for future generations.
- Receive a better rate of return than any current savings accounts offer.

Get paid for your electricity

- Sharp's new Hamburg Solar Roof Kits are of superior quality and installation is seamless, quick and simple. Sharp kits are the ideal way of taking advantage of the generous new FiT scheme. If you are considering investing in a solar system, we strongly advise you to get your system installed before 2012. The government has ambitious environmental targets and to help achieve them, they have set the FiT at a generous initial rate of 41.3 p/kWh*. This will be reduced by 8.5% a year after 2012. Installing a solar PV system before 2012 will ensure you receive the highest rate there is. The FiT is divided into two revenue streams:

Generation Tariff

- This tariff is a fixed rate your electricity supplier will pay you for every unit of electricity your system generates, whether you use the power or not. It is currently set at 41.3 p for every unit or kilowatt-hour (kWh) of energy generated.

Export Tariff

- This tariff is an additional rate you will earn for electricity you export to the National Grid. You will be paid 3 p per unit or kWh.
- On top of the earnings from these two tariffs there are the savings you make on your electricity bill by not having to buy in electricity. By generating your own electricity you will save about 12 p for every kWh you use yourself. Please see overleaf for an example of the savings and income generated from a 2.88 kWp Sharp Hamburg Roof System. For further details of the Hamburg Roof System please visit www.sharpmanufacturing.co.uk

*For retro-fitted installations up to a maximum size of 4 kWp
36.1 p/kWh for newly built installations up to a maximum size of 4 kWp

Example of earnings & savings from a 2.88 kWp system

The house below is a typical three-bedroom house whose owners have had a Sharp Hamburg 2.88 kWp Photovoltaic System installed.

The owners get paid 41.3 p/kWh for all the electricity the system generates, whether they use it or not. If the system is generating electricity at times when it is not required, the excess energy is exported to the National Grid via the owners' normal energy provider and they are paid an additional 3 p/kWh.

The owners can reduce the amount of electricity they import by 50% and in the first year the system gives combined income and savings of over £900.

- House uses UK average of 3,300 kWh* of electricity per year which at 12 p/kWh would usually cost £396.00.
- House generates 2,448 kWh of energy a year or †85% of the output from a 2.88 kWp system.
- Half of the energy generated is fed back into the grid and half used by the occupants.
- House still needs to import 2,076 kWh of electricity from the grid.

* Average electricity usage for single rate electricity averaged across all regions of the UK.

† 850 kWh per kW installed (85%) is the UK social average but this may vary from 70% in the North to 100% in the South.

Grid-connected PV system

Calculation example

Generation Tariff

Earn £1,011.02** a year

Export Tariff

Earn £36.72** a year

Amount saved

Save £146.88** a year

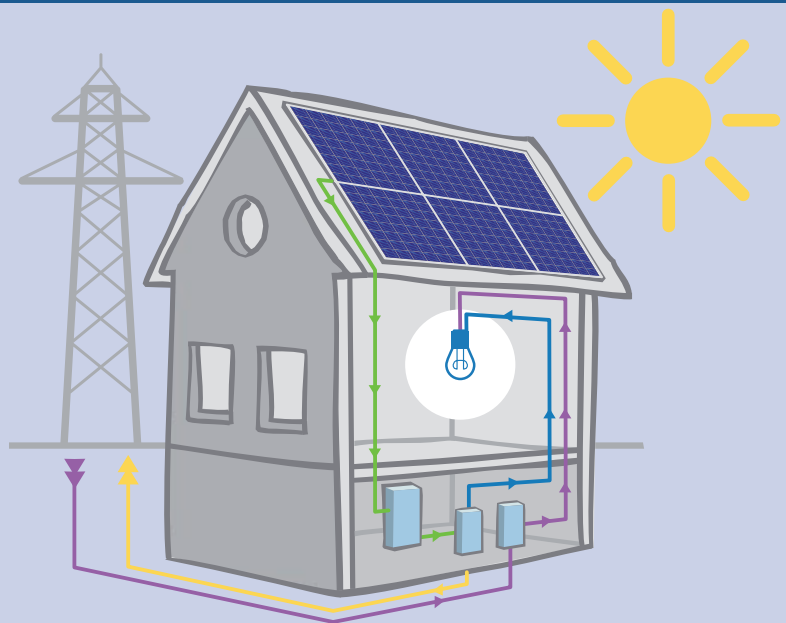
Amount imported

Spend £249.12** a year

Income & savings

Total £945.50** a year

A Sharp Hamburg 2.88 kWp Roof System could generate you combined tax-free income and savings of £945.50* per year.



Figures based on a 2.88 kWp system generating an output of 85% with 50% usage. **These figures are for illustrative purposes only. A more accurate forecast can only be given on completion of a survey.

Generation Tariff Earn	Export Tariff Earn	Energy saved Save	Energy imported Pay	Annual income & savings	Total after 25 years
2,448* × 41.3 p/kWh = £1,011.02	1,224† × 3 p/kWh = £36.72	1,224† × 12 p/kWh = £146.88	3,300 – 1,224† = 2,076 2,076 × 12 p/kWh = £249.12	Generation Tariff + Export Tariff + Energy Saved	= £23,637.50
Generation Tariff until 2012 = 41.3 p	Export Tariff until 2012 = 3 p	*85% output from a 2.88 kWp system		– Energy Imported	= £945.50 per year
		†50% of generated energy			

Sharp Energy Solution Europe
a division of Sharp Electronics (Europe) GmbH
Martin Banner, Sales Specialist International Web Sales
Sonninstrasse 3, 20097 Hamburg, Germany
Tel.: +49 40 23 76 27 11 • Fax: +49 40 23 76 15 27 11
martin.bannier@sharp.eu www.sharp.eu

SHARP

HAMBURG ROOF